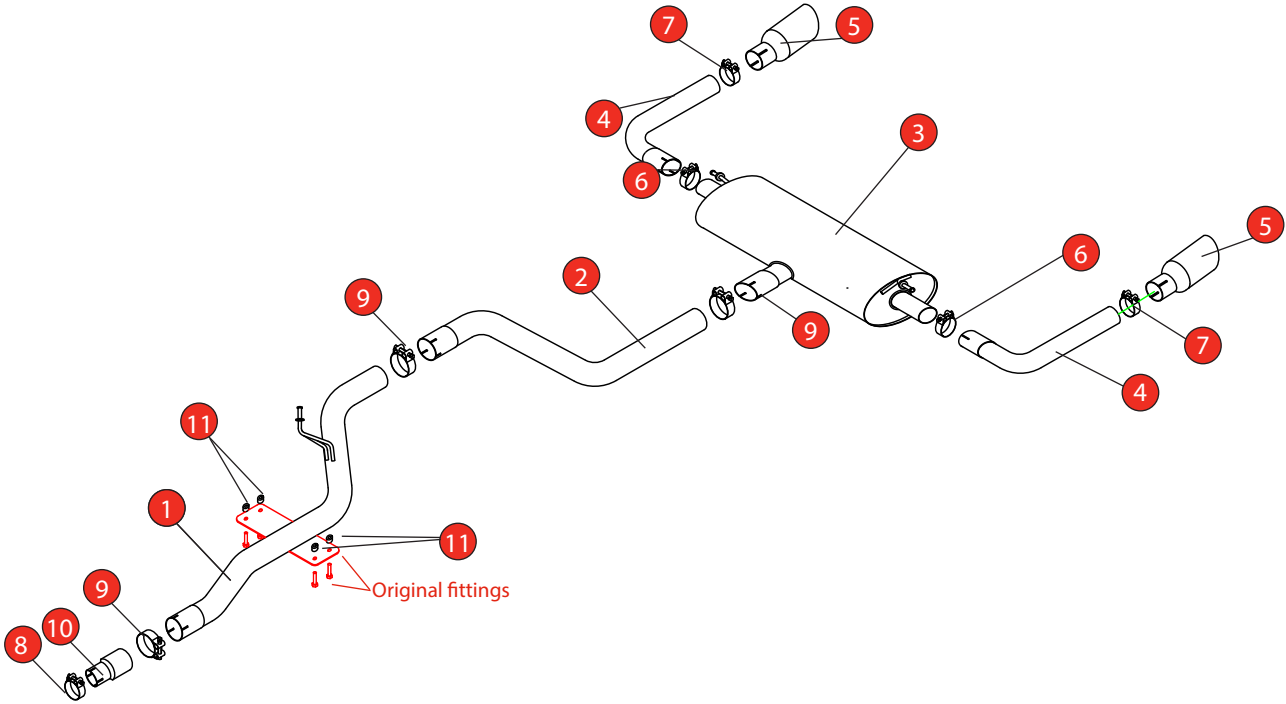


Car	Ford Focus ST MK4 Estate	Part No.	SFDS096DC
Year	2019-Current	Fit Kits	342FK
Notes	Where not supplied use original fittings OE system requires cutting, see details below.	Features	Pipe Diameter:- 76mm

Estimated Fitting Time: 60 Minutes



NO.	PART NO.	DESCRIPTION	QTY
1	1307FD	Centre Pipe	1
2	1308FD	Link Pipe	1
3	1309FD	Rear Section	1
4	1315FD	LH & RH Trim Pipe	2
5	Z023.10153	Ø114mm Ceramic Black Daytona Trim	2
<b>Fit Kit</b>			
6	Z016.10070	65mm H/D Clamp	2
7	Z016.10064	63 - 68mm H/D Clamp	2
8	Z016.10001	59 - 63mm Clamp	1
9	Z016.10062	79mm H/D Clamp	3
10	AD46	Adapter	1
11	Z026.20161	10mm Spacer	4

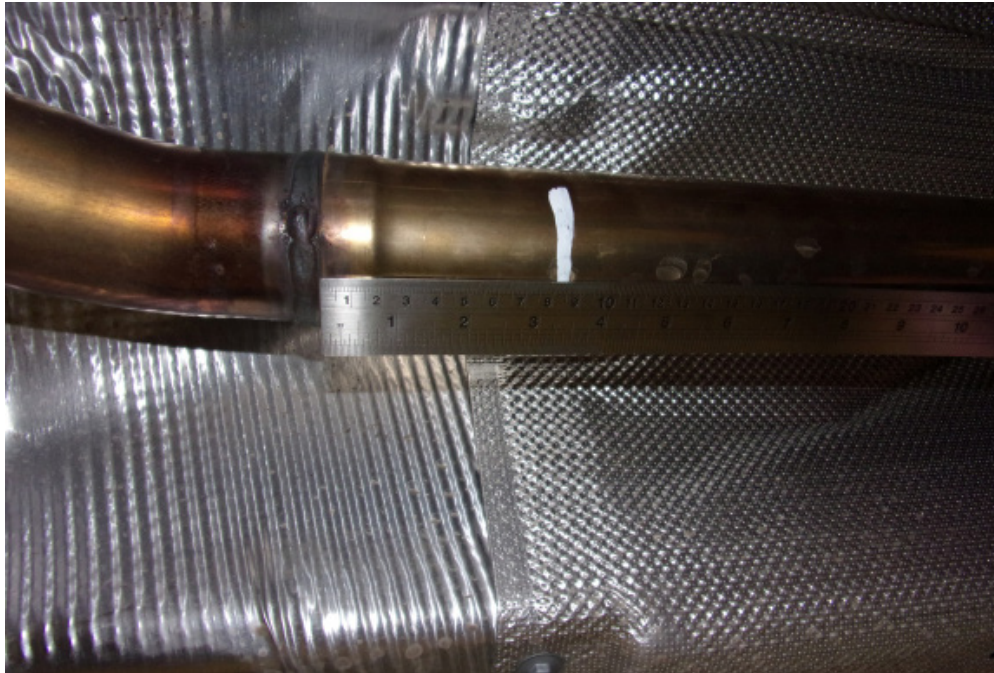
DATE	11/01/22
ISSUE	00
AUTHORISED	S.Shipley

**NOTE:** ENSURE SCORPION SYSTEM IS CLEAR OF MOVING PARTS AND ALL ORIGINAL FUNCTIONS WORK CORRECTLY.

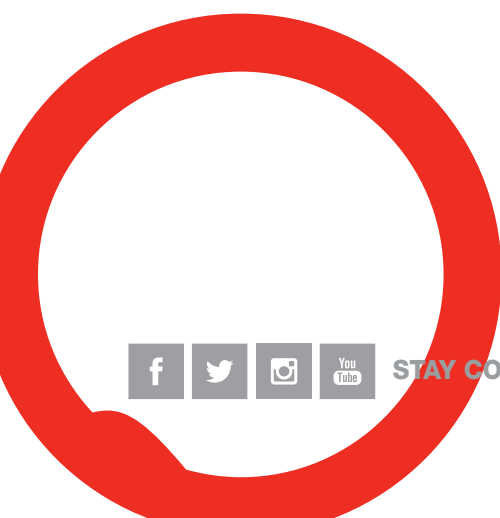


STAY CONNECTED TO RED POWER.

Car	Ford Focus ST MK4 Estate	Part No.	SFDS096DC
Year	2019-Current	Fit Kits	342FK
Notes	Where not supplied use original fittings OE system requires cutting, see details below.	Features	Pipe Diameter:- 76mm



Cut the OE system 85mm in front of the weld (towards the front of the vehicle) and remove sharp edges



STAY CONNECTED TO RED POWER.